



# STREAM Newsletter

Issue 4

## Study on Transitions in Employment, Ability and Motivation

### Theme: Initial Results from the 4<sup>th</sup> Wave: Employment Transitions & Health

#### What is STREAM?

STREAM is a **four-year longitudinal study** with annual measurements among persons **aged 45-64** in the Netherlands. Participants fill in an online questionnaire on topics such as: health, work, knowledge and skills, social circumstances, and financial situation.

More than **12,000 employees, 1,000 self-employed persons, and 2,000 non-employed persons** participated at baseline. In the second measurement 82% of the original participants participated, in the third measurement this was 80%, and in the fourth measurement 74%.

For data collection an existing Intomart GfK internet panel is used. For 89% of baseline participants, **data linkage** with information from **Statistics Netherlands** is possible.

To obtain addition insight, **qualitative studies** have been and will be conducted among STREAM participants.

STREAM is being conducted by **TNO**, in close collaboration with the **VU Medical Center** and the **Erasmus MC**.



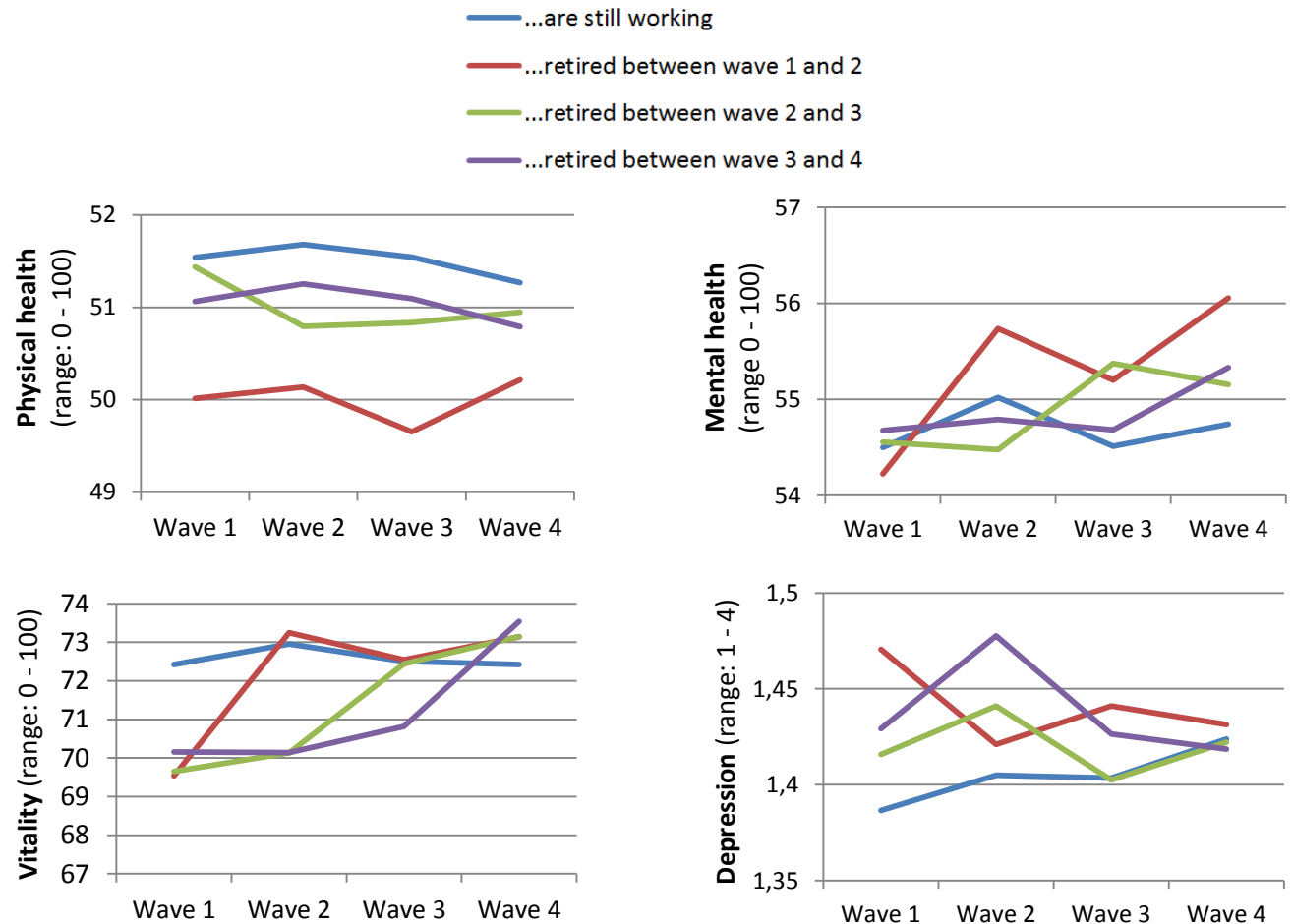
#### STREAM TNO STAFF:

DR. GOEDELE GEUSKENS: PROJECT LEADER  
DR. SWENNEKE VAN DEN HEUVEL: RESEARCH FELLOW  
LAUDRY VAN DER MEER: RESEARCH FELLOW  
ASTRID DE WIND: PHD STUDENT  
FENNA LEIJTEN: PHD STUDENT  
DR. ERNEST DE VROOME: STATISTICIAN  
PROF. DR. PAULIEN BONGERS  
DR. BIRGITTE BLATTER

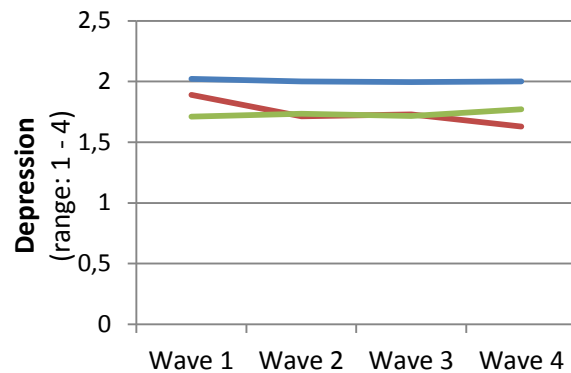
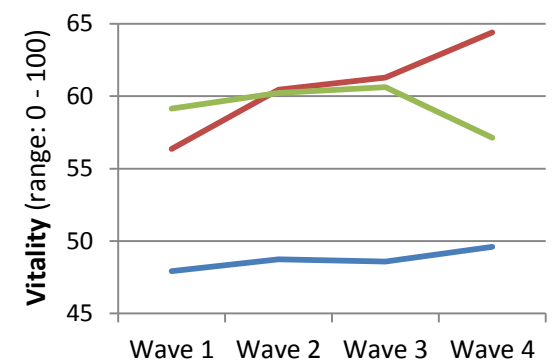
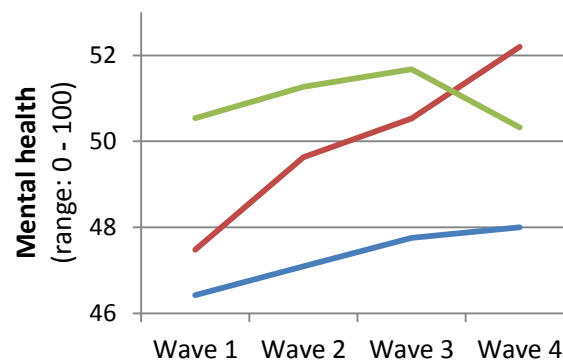
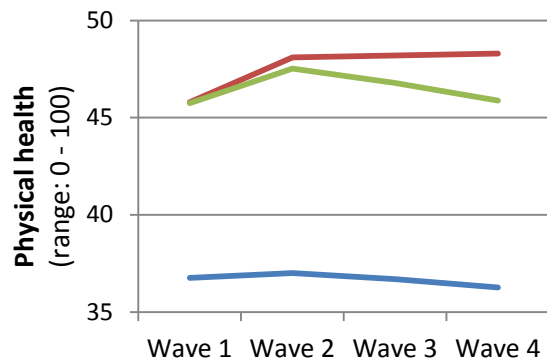
#### IN COLLABORATION WITH:

**ERASMUSMC:** PROF. DR. ALEX BURDORF  
**VUMC:** PROF. DR. ALLARD VAN DER BEEK

**Physical and mental health, vitality, and depression** of employees aged 60+ at baseline, that...



Physical health and vitality were highest, and depression scores lowest, among workers that remained employed throughout the 4 waves. The mental health and vitality of retirees increased and depression (slightly) decreased in the transition period. These figures are unadjusted.



In these (unadjusted) figures physical and mental health, vitality, and depression scores are compared between persons non-employed at baseline that, during follow-up: **stayed non-employed**, **started to work**, and **worked but became non-employed again**. Persons that remained non-employed consistently had the lowest scores on physical and mental health and vitality, and the highest scores on depression. Persons that started to work showed an increase in physical and mental health and vitality, and a slight decrease in depression.

## Newest Publications

- \*Leijten FRM, van den Heuvel SG, van der Beek AJ, Ybema JF, Robroek SJW, Burdorf A. "Associations of work-related factors and work engagement with mental and physical health: a 1-year follow-up study among older workers". *Journal of Occupational Rehabilitation*. 2014;online first. [LINK](#)
- Leijten FRM, van den Heuvel SG, Ybema JF, Robroek SJ, Burdorf A. "Do work factors modify the association between chronic health problems and sickness absence among older employees?" *Scandinavian Journal of Work, Environment & Health*. 2013;39:477-85. Link: [LINK](#)
- Münderlein M, Ybema JF, Koster F. "Happily ever after? Explaining turnover and retirement intentions of older workers in the Netherlands". *Career Development International*. 2013;18:548-568. [LINK](#)
- Reeuwijk KG, de Wind A, Westerman MJ, Ybema JF, van der Beek AJ, Geuskens GA. "'All those things together made me retire': qualitative study on early retirement among Dutch employees". *BMC Public Health*. 2013;13:516. [LINK](#)
- van de Vijfeijke H, Leijten FRM, Ybema JF, van den Heuvel SG, Robroek SJW, van der Beek AJ, Burdorf A, Taris TW. "Differential Effects of Mental and Physical Health and Coping Style on Work Ability". *Journal of Occupational & Environmental Medicine*. 2013;55:1238-1243. [LINK](#)
- de Wind A, Geuskens GA, Reeuwijk KG, Westerman MJ, Ybema JF, Burdorf A, Bongers PM, van der Beek AJ. "Pathways through which health influences early retirement: a qualitative study". *BMC Public Health*. 2013;13:292. [LINK](#)
- de Wind A, Geuskens GA, Ybema JF, Blatter BM, Burdorf A, Bongers PM, van der Beek AJ. "Health, job characteristics, skills, and social and financial factors in relation to early retirement – results from a longitudinal study in the Netherlands". *Scandinavian Journal of Work, Environment & Health*. 2013;40:186-94. [LINK](#)
- Ybema JF, Geuskens GA, van den Heuvel SG, de Wind A, Leijten FRM, Joling C, Blatter BM, Burdorf A, van der Beek AJ, Bongers PM. "Study on Transitions in Employment, Ability and Motivation (STREAM): The Design of a Four-year Longitudinal Cohort Study among 15,118 Persons Aged 45 to 64 Years". *British Journal of Medicine & Medical Research*. 2014;4:1383-99. [LINK](#)

\*newly added to the list

More information on  
STREAM is available at:

[www.tno.nl/STREAM](http://www.tno.nl/STREAM)

Contact:  
infostream@tno.nl

STREAM is interested in  
(inter)national and  
multidisciplinary  
collaborations to  
conduct innovative  
research with practical  
implications. Contact us  
for possible  
partnerships!

## Upcoming Events

- ICOH WOPS 2014: International Congress for Occupational Health and Work Organisation and Psychosocial Factors. Adelaide, Australia September 17-19, 2014.  
Contribution STREAM: Oral presentation Fenna Leijten.